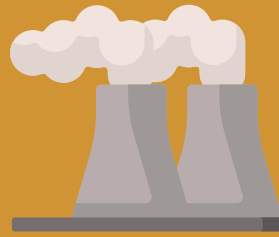


FINANCIALLY

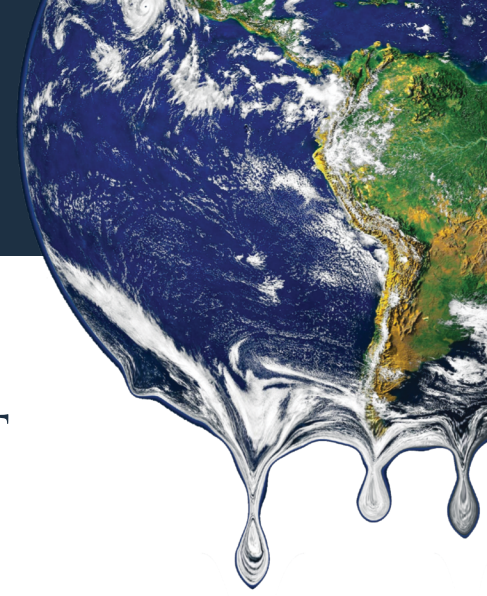
Fossil fuels are a major contributor to global warming.

The Environment Group has been calling on the Diocese to divest from fossil fuel investments in previous years. In May 2020 the Diocese of Arundel & Brighton announced their intention to fully divest from fossil fuel firms by the end of 2020.

Invest your money in ethical investments - avoid fossil fuel and other extractive industries. Ensure your bank does not support firms that exploit workers or harm the environment. See Triodos Bank at www.triodosbank.com or www.ethicalconsumer.org.



THE CATHOLIC DIOCESE OF
ARUNDEL & BRIGHTON



THE ENVIRONMENT GROUP

The Environment Group has been set up as a response to the growing awareness of the dangers of climate change.

Scientists confirm we have **just 10 years** to drastically reduce carbon emissions or face irreversible changes in climate, with all its devastating realities. Droughts, floods, rising sea-levels and soaring temperatures are all evidence of the damage that our actions are inflicting on the world. Millions of people are now suffering from climate change, most **often in the poorest countries of the world**, and least able to withstand its effect.

Pope Francis calls us to be aware of what we have done to our world and that without immediate action, we will inflict irreparable damage on our planet, **adversely affecting future generations**.

Bishop Richard calls on us all to **"wake up"** and engage in the practical actions necessary to help create a flourishing future for all creation.

The Environment Group issues this leaflet providing **a framework for actions we can all take** - diocese, parish, and individually - to stop the damage being done to God's creation by our lifestyles and wasteful ways of living.

WHAT CAN WE DO?

THE 4 PRIORITIES OF CLIMATE-FRIENDLY LIVING



REDUCING ENERGY USE

Switching to green renewable energy sources can save up to 1.6 tonnes of CO2 per year per person.



ECO TRANSPORT

Living car-free for a year saves 2.4 tonnes of greenhouse gas emissions, and each transatlantic flight avoided saves 1.6 tonnes.



PLANT BASED DIET

Eating less meat and more vegetables will save tonnes of CO2 emissions from meat production, avoid destruction of rainforests, and improve health.



PLANT TREES

Planting trees will absorb CO2 emissions for many years to come.

CONTACTS

Environment Group: ashley.ralston@ntlworld.com

Journey to 2030: jp@theecg.org

Social Action Advisor: Tessa.Ricketts@abdiocese.org.uk

AS A DIOCESE

A Diocesan Environmental Policy is being produced.

The 'Journey to 2030' programme is an initiative created by young people in our diocese to mobilise our church to act on the ecological crisis, and is supported by the Bishop's Conference of England and Wales. Visit: www.journeyto2030.org

THE JOURNEY TO
2030

IN OUR HOMES



IN OUR PARISH

- **Install bike racks** to encourage use of bicycles. Encourage use of public transport and car sharing.
- **Avoid plastic** wherever possible e.g. disposable cutlery, plates and cups, also single use plastic packaging.
- **Use Fairtrade** tea, coffee, biscuits etc. at all times. Use environmentally friendly cleaning products.
- **Use paper efficiently** and use recycled paper if possible. Ensure all recyclable waste is appropriately disposed of.
- Ensure electrical equipment and lights are off when not in use. **Use low energy or LED bulbs where possible.**
- Could your church have an **environment and energy audit**?
- Could your church install **solar panels**?



- **Use less energy and fuel where possible.** Consider changing to a green energy provider. Buy energy efficient lights and appliances and turn them off when not in use. You could draught proof your home and maybe install solar panels.
- **Use cars less** and public transport or car sharing more. Avoid flying.
- **Be frugal with water** - showers use less water than baths. Fix leaky taps, and use washing up and rainwater from the roof and downpipes for the garden.
- **Avoid single use plastic** and unrecyclable containers and bags. Recycle as much of your refuse as possible. See your Local Authority website for recycling tips.
- **Donate** unwanted, usable items to charity shops. Put unwanted textiles in council textile banks.
- **Use environmentally friendly products** for cleaning and avoid pesticides in the garden.
- **Buy Fairtrade products** such as coffee, tea, fruit and flowers as much as possible. Buy locally grown produce.
- **Avoid food wastage.** Only buy what you need and always compost food and organic waste.

**Become a 'FairTrade'
and a 'Live Simply' Parish.**

REDUCE REUSE RECYCLE